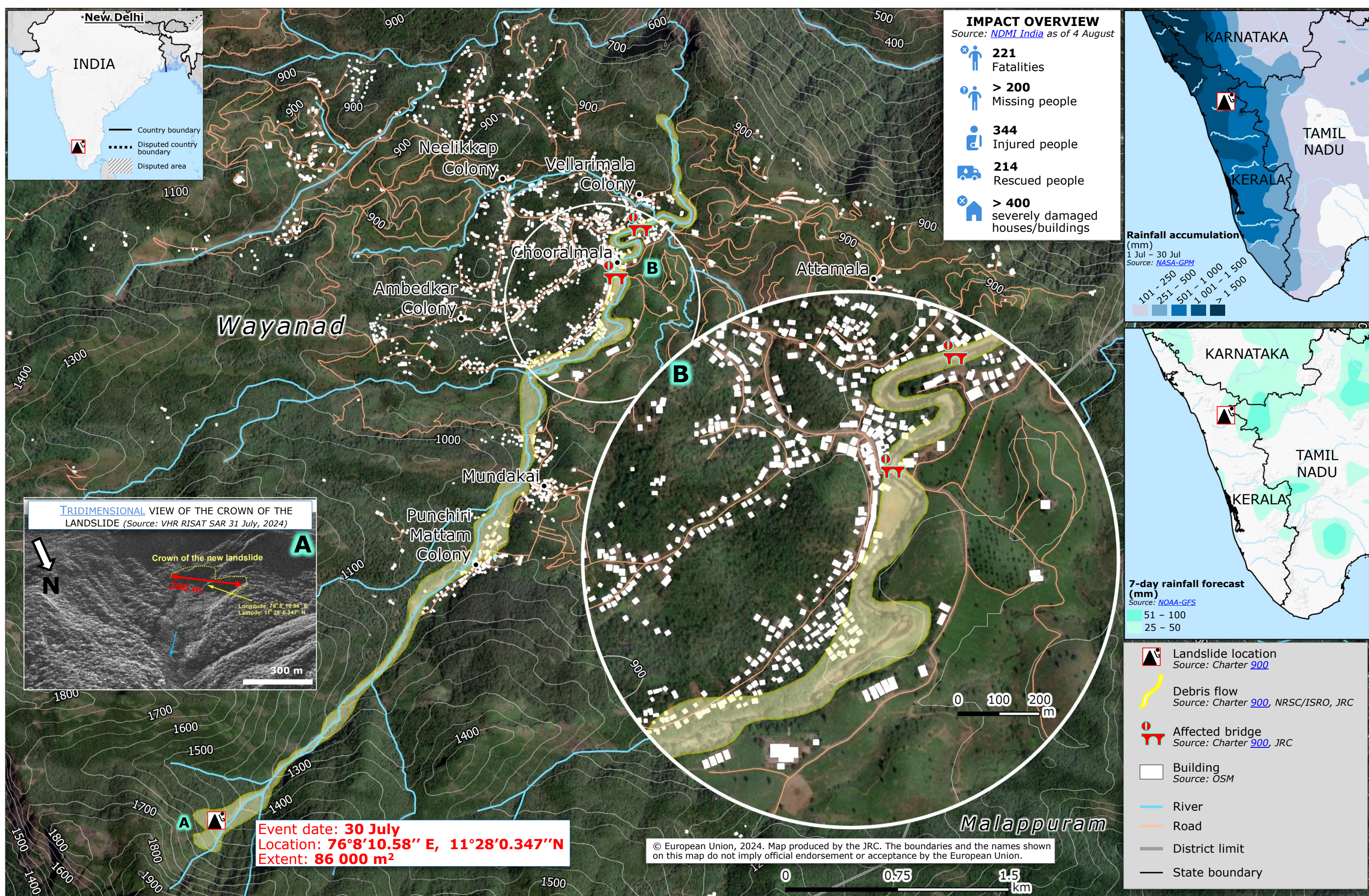


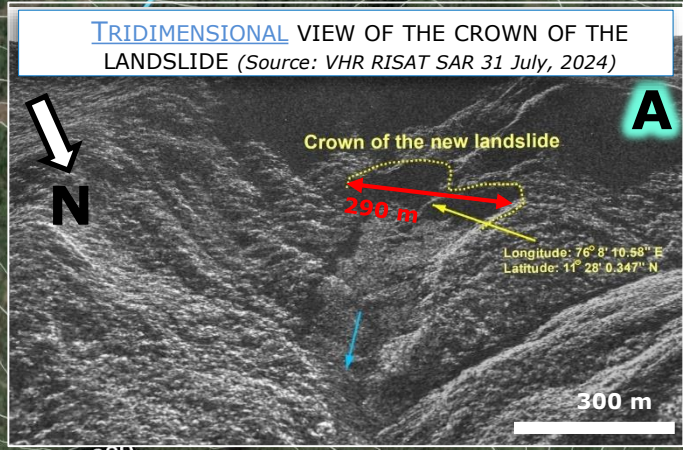
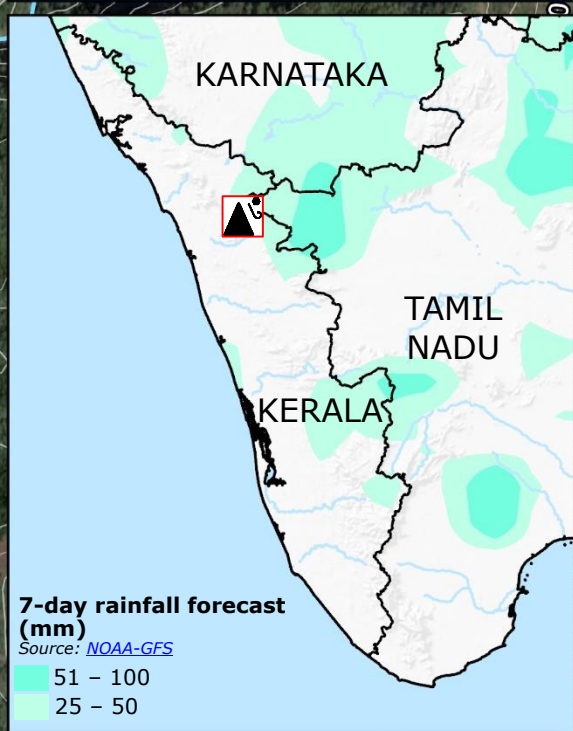
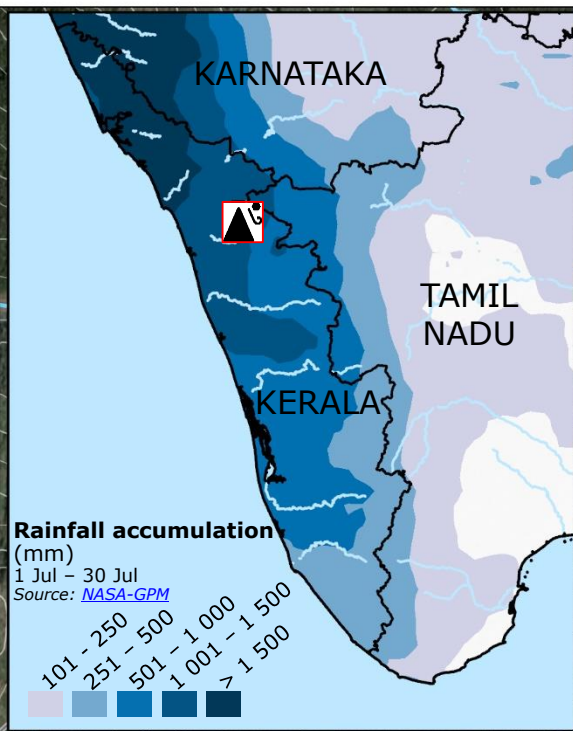
India | Landslide in Kerala state of 30 July



IMPACT OVERVIEW

Source: [NDMI India](#) as of 4 August

- 221** Fatalities
- > 200** Missing people
- 344** Injured people
- 214** Rescued people
- > 400** severely damaged houses/buildings



Event date: 30 July
Location: 76°8'10.58" E, 11°28'0.347" N
Extent: 86 000 m²

© European Union, 2024. Map produced by the JRC. The boundaries and the names shown on this map do not imply official endorsement or acceptance by the European Union.

- Landslide location
Source: [Charter 900](#)
- Debris flow
Source: [Charter 900](#), [NRSC/ISRO](#), [JRC](#)
- Affected bridge
Source: [Charter 900](#), [JRC](#)
- Building
Source: [OSM](#)
- River
- Road
- District limit
- State boundary

