

# AERODROME CHART

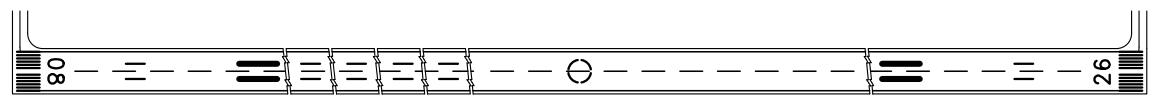
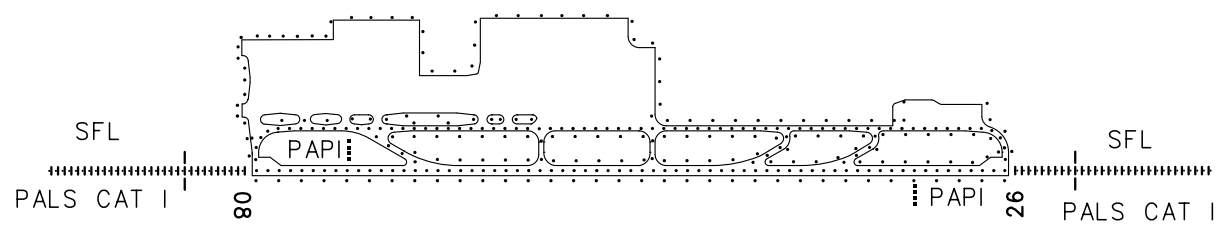
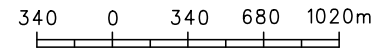
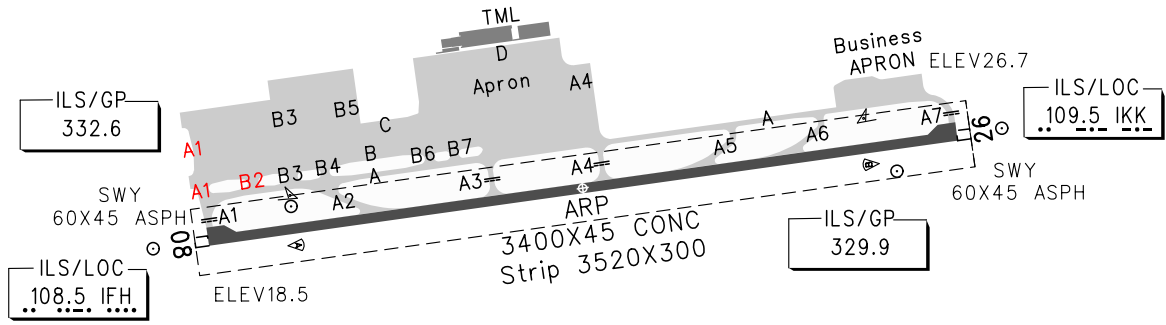
ATIS 126.45  
TWR 118.15(118.85)  
GND 121.7

## ZJSY SANYA/Phoenix

N18° 18.1'E109° 24.8' ELEV 29m

RWY	Direction	Bearing strength(PCN)
08	083°	TWY D, Apron(stands Nr.1-10): 91/R/B/W/T Business apron (stands Nr.901-909, 903L, 903R): 85/R/B/W/T Apron(stands Nr.12-46, 310-312), RWY, TWY B, B2, B3, B5-B9, C: 80/R/B/W/T
		TWY A3, A6: 79/R/B/W/T TWY A4, A5: 78/R/B/W/T TWY A2, A4: 77/R/B/W/T TWY A, A1(S of TWY B), A7: 75/R/B/W/T TWY A1(N of TWY B), stands Nr.301-309: 68/R/B/W/T
26	263°	

BEARINGS ARE MAGNETIC  
ALTITUDES, DISTANCES,  
ELEVATIONS AND HEIGHTS  
IN METERS



TAKE-OFF MINIMA(WITH RELIABLE ALTN)(m)				LIGHTS	
RWY	ACFT Type	REDL	NIL(Day only)	RWY08	RWY26
08	2 TURB ENG or 3&4 ENG	RVR400	RVR500	PALS CAT I SFL PAPI REDL RCLL	PALS CAT I SFL PAPI REDL RCLL
	Other	VIS1600			
26	CEILING 300/VIS5000.				

Changes: New TWYs and stands.