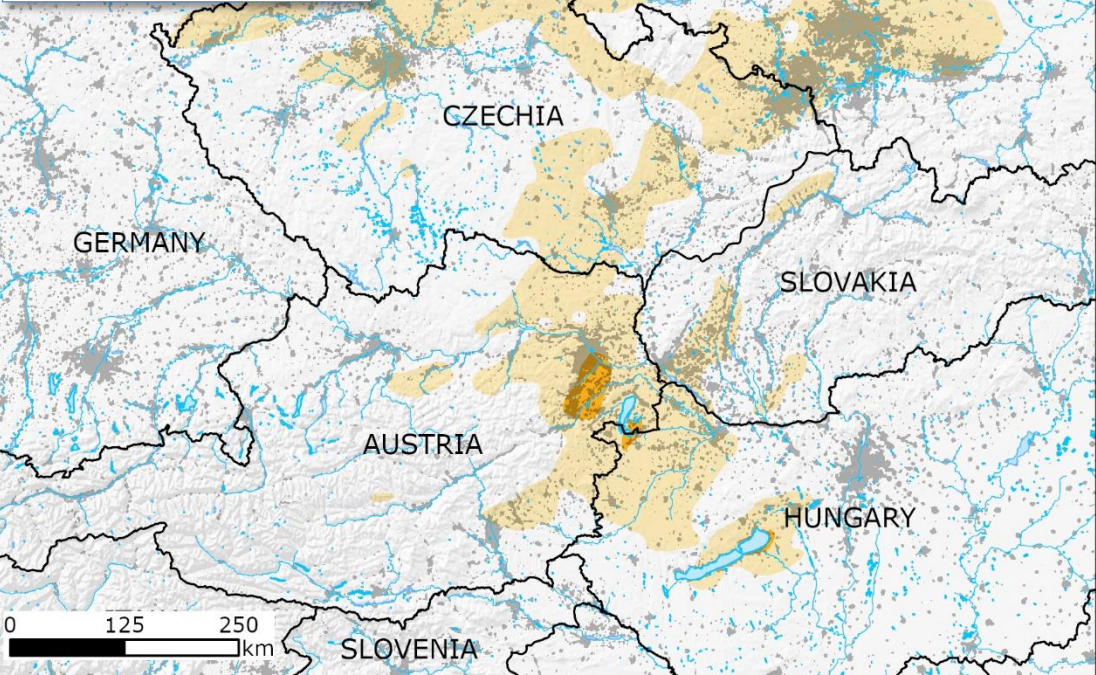


# Central-eastern Europe | Severe weather

**Wind speed (km/h)\***  
 over 12 Sep at 00:00 UTC  
 to 15 Sep at 00:00 UTC  
 Source: ECMWF, JRC modelling

- 50-61 (near gale)
- 39-49 (strong breeze)



POTENTIAL EXPOSED POPULATION TO PRECIPITATION		
Source: ECMWF, JRC modelling		
>250 mm	10 693 people	Czechia
100-250 mm	16.7 million people	Austria, Bosnia and Herzegovina, Croatia, Czechia, Germany, Hungary, Italy, Poland, Romania, Slovakia, Slovenia, Ukraine

**Precipitation forecast (mm)**  
 over 12 Sep at 00:00 UTC to  
 15 Sep at 00:00 UTC  
 Source: ECMWF, JRC modelling

- 201 - 267
- 151 - 200
- 101 - 150
- 51 - 100
- 25 - 50

**Community Advisory**  
 over 12 Sep – 15 Sep, as of 12 Sep at 12:00 UTC  
 Source: IMGW, DWD, SHMU, CHMI, Warnungen, MeteoAlarm

- Heavy rainfall red warning
- Flood red warning
- Heavy rainfall orange warning
- Floods orange warning
- Strong wind orange warning

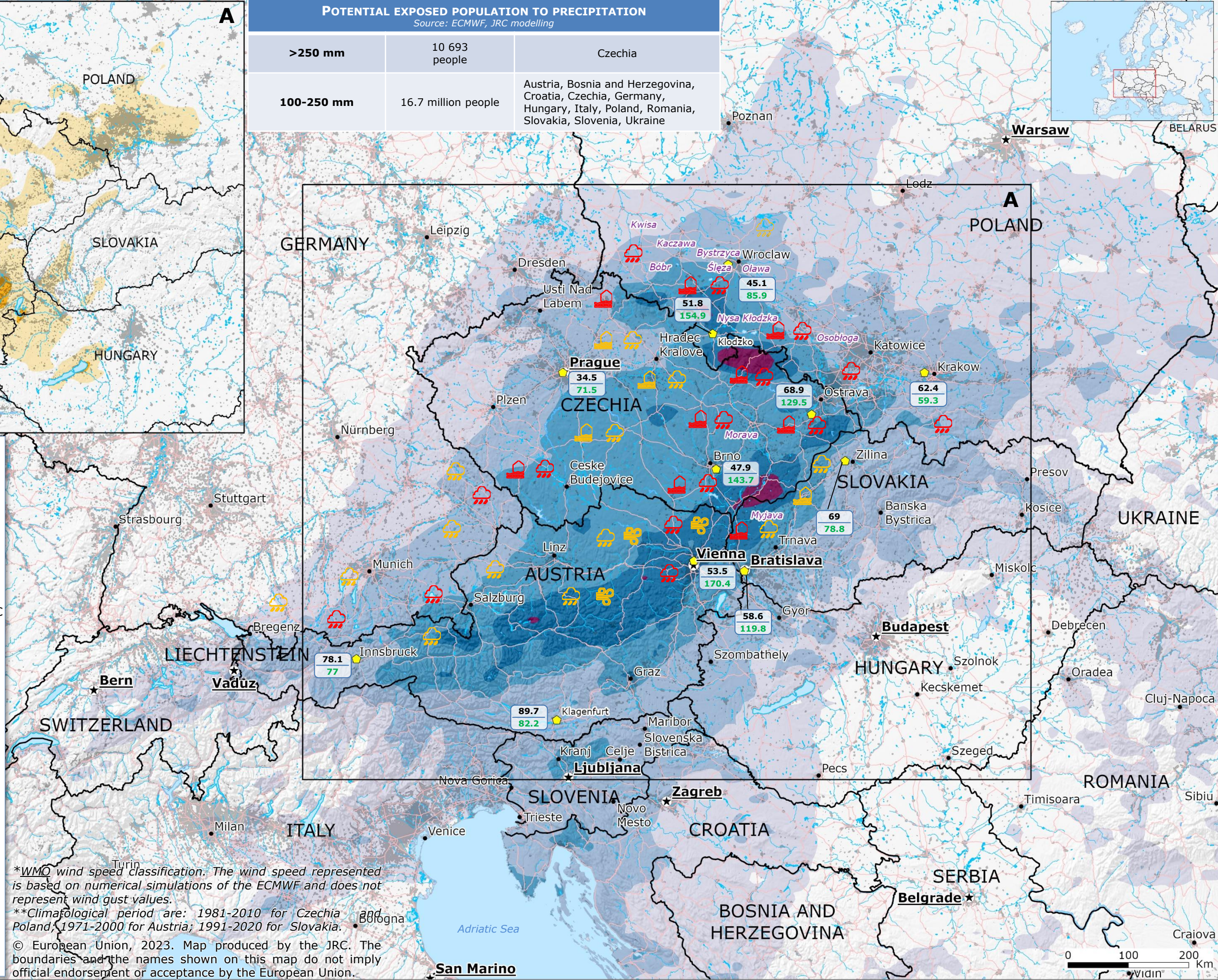
*Name* River under hydrological warning

**Precipitation values at selected cities**  
 Source: WWIS-WMO, ECMWF

Climatological station

**Normal Forecast** Normal September precipitation\*\*  
 3-day precipitation forecast

- Built-up area  
Source: Copernicus EMS GHSL
- Main roads
- River
- Country boundary



\*WMO wind speed classification. The wind speed represented is based on numerical simulations of the ECMWF and does not represent wind gust values.  
 \*\*Climatological period are: 1981-2010 for Czechia Poland, 1971-2000 for Austria; 1991-2020 for Slovakia.  
 © European Union, 2023. Map produced by the JRC. The boundaries and the names shown on this map do not imply official endorsement or acceptance by the European Union.

